

## FAMILIES

Families are invited to a TDM™ meeting to assist in **making the best possible decisions about where a child can safely live**. Youth are also invited to participate in their own meetings, and younger children's voices must be "heard" in every meeting.

## SUPPORT NETWORK

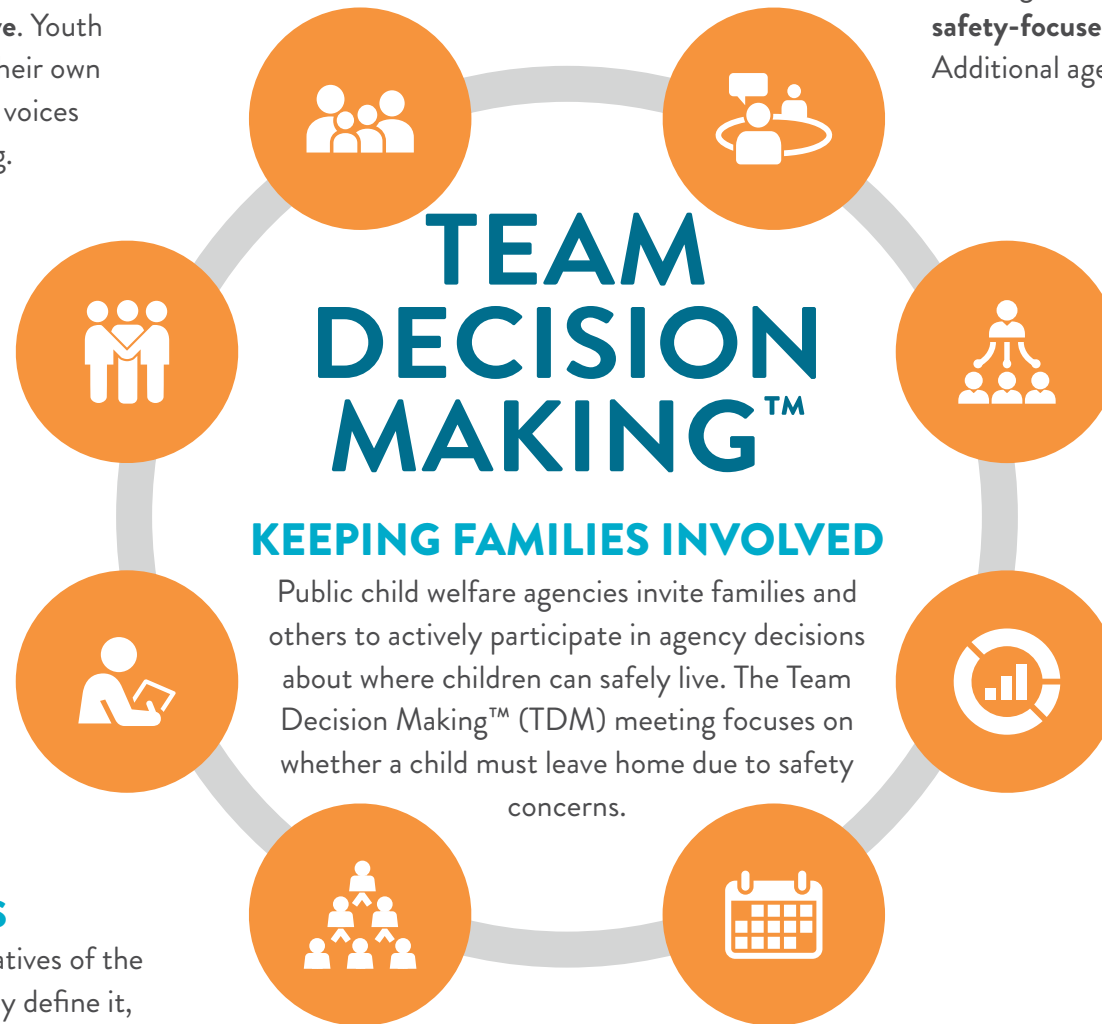
Families are **encouraged to invite** extended family, friends, spiritual leaders, and other supporters to the meeting.

## SERVICE PROVIDERS

Current or past service providers, such as therapists or substance abuse counselors, may also be invited to the TDM meeting.

## COMMUNITY MEMBERS

The agency may invite representatives of the family's community, however they define it, to **support the family and assist** in building an enduring safety net for them.



## PUBLIC AGENCIES

Assigned worker and supervisor convene the meeting to **seek the team's help in making a safety-focused, placement-related decision**. Additional agency staff members participate.

## FACILITATOR

An experienced and immediately accessible agency facilitator guides the group, using the **six-stage meeting model**.

## DATA

Information from each meeting is **collected and linked to data** on child and family outcomes.

- Children with a timely TDM meeting are **half as likely to experience repeat maltreatment** within six months, studies show.
- High-quality TDM meetings **increase the chance of reunification** within one year for children of all races.\*

## TIMING

A TDM meeting is held before the child moves from their home or current placement. In an emergency, the child's safety needs are met first and the meeting must occur as soon as possible.